

# MaineCare (Maine's Medicaid Program)

MaineCare Plays a Major Role When it comes to the Health of Maine People

## What is MaineCare?

“**MaineCare**” is Maine’s Medicaid Program. Medicaid is the nation’s public health insurance program for people with low incomes, disabilities and those needing long term care.

It is the single largest source of health coverage in the U.S. Medicaid is **not** Medicare which is a 100% federally funded program mainly for seniors.

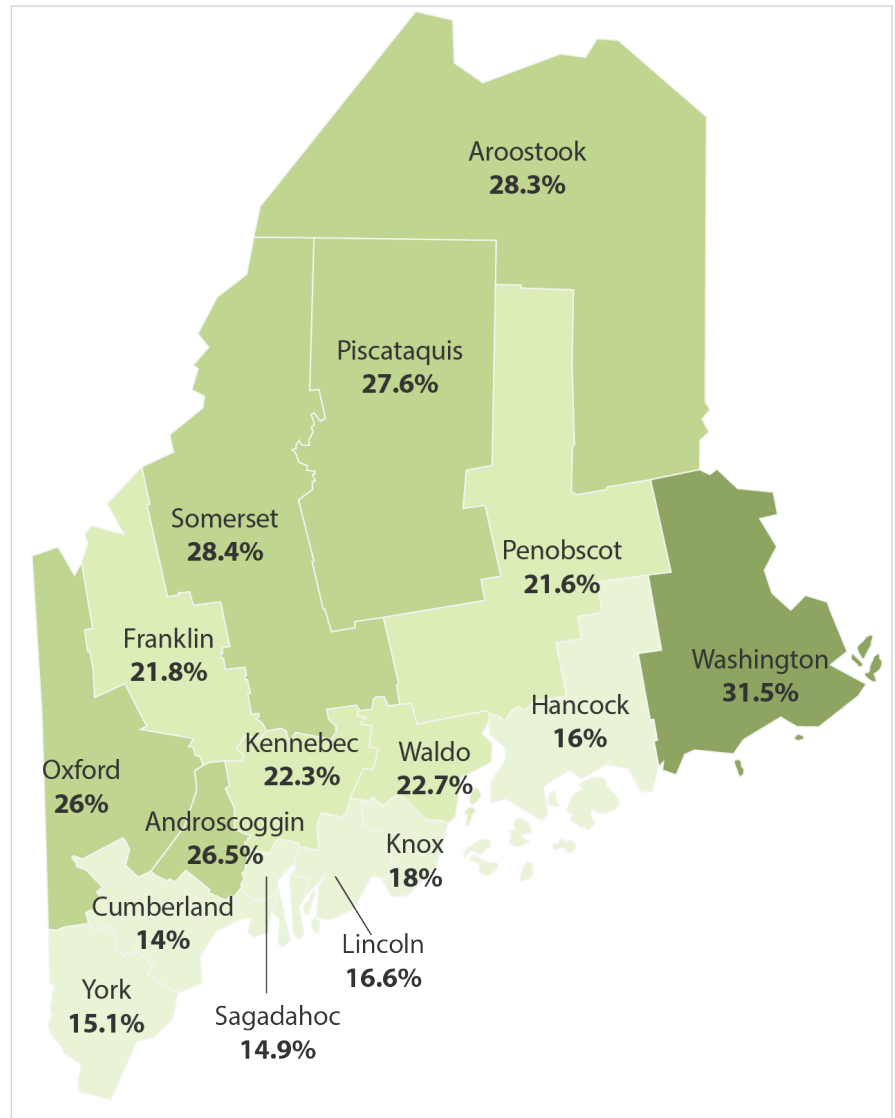
**MaineCare** is a means-tested program providing health coverage based on income and assets. Twenty percent of our State’s residents rely on MaineCare for health care coverage.

The federal and state governments each **share** in the cost of Medicaid.

**Currently the federal government pays approximately 64% of MaineCare benefit costs while Maine pays about 36%.** (The federal share is slightly adjusted up or down each year based on a federal formula.)

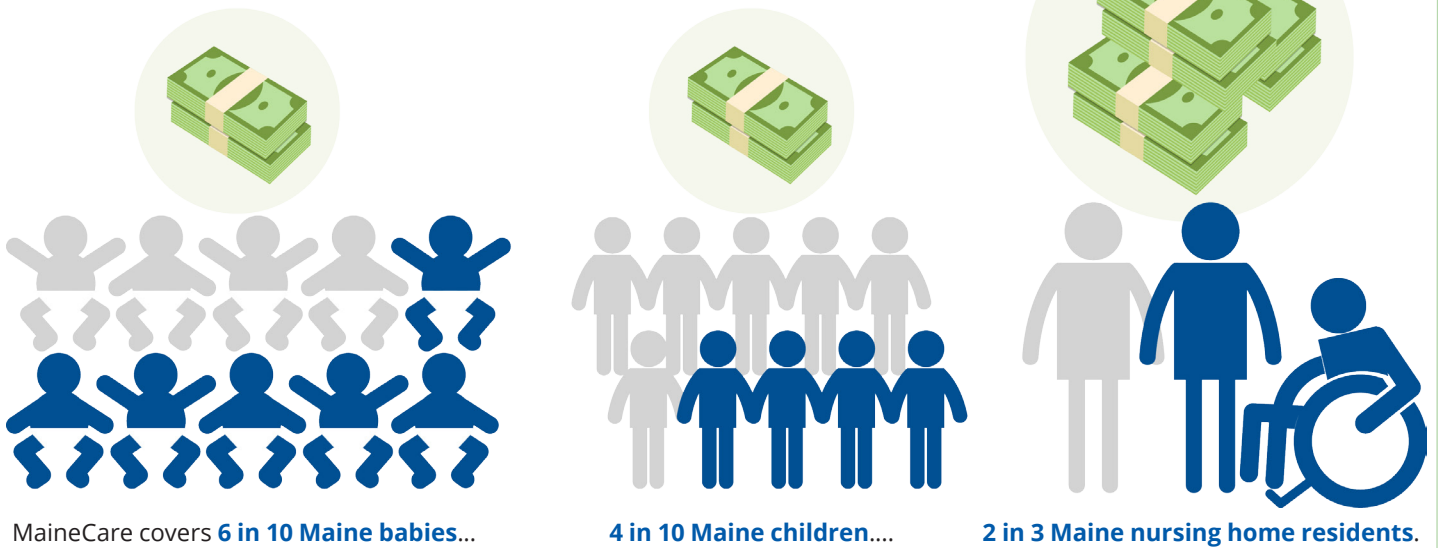
**MaineCare** covers older people, including those in residential care and nursing facilities; people with disabilities; pregnant women; children and some of their parents; and individuals with certain diseases.

*Rural Maine is more reliant on MaineCare for health care coverage.*



Share of population covered by MaineCare by county.

Most MaineCare **enrollees** are **children and families**, but most **MaineCare spending supports older Mainers and people with disabilities**...



**Over 40,000 Mainers have lost access** to health insurance through MaineCare as a result of policy choices made over the last 5 years.

The Governor's proposed budget would **eliminate coverage for another 30,000 Mainers (20,000 working parents and 10,000 19 and 20 year olds)**. This Administration has now asked the federal government for approval of a "waiver" that would reduce coverage for thousands more.

During this same period, Maine's **overall health ranking has fallen** from 10th best in the nation to 22nd.<sup>1</sup>

DHHS' own needs assessment identified the top leading factors when it comes to poor health for Maine people:

Top 5 contributors to poor health in Maine:

- poverty**
- access to behavioral/mental health care**
- transportation**
- health insurance**
- employment**

Source: Maine Department of Health and Human Resources, Maine Shared Needs Assessment & Planning Process, 2016 Androsocggin Report

- FACT:** **4 in 10 Maine children** are covered by **MaineCare**. MaineCare is the backbone of the behavioral health system for children through age 20.
- FACT:** **6 in 10 Maine babies** get a healthy start in life thanks to **MaineCare**.
- FACT:** **2 in 3 Maine nursing home residents** are covered by **MaineCare**.

<sup>1</sup><http://kff.org/medicaid/state-indicator/federal-matching-rate-and-multiplier/?currentTimeframe=0&sortModel=%7B%22colld%22:%22Location%22,%22sort%22:%22asc%22%7D>